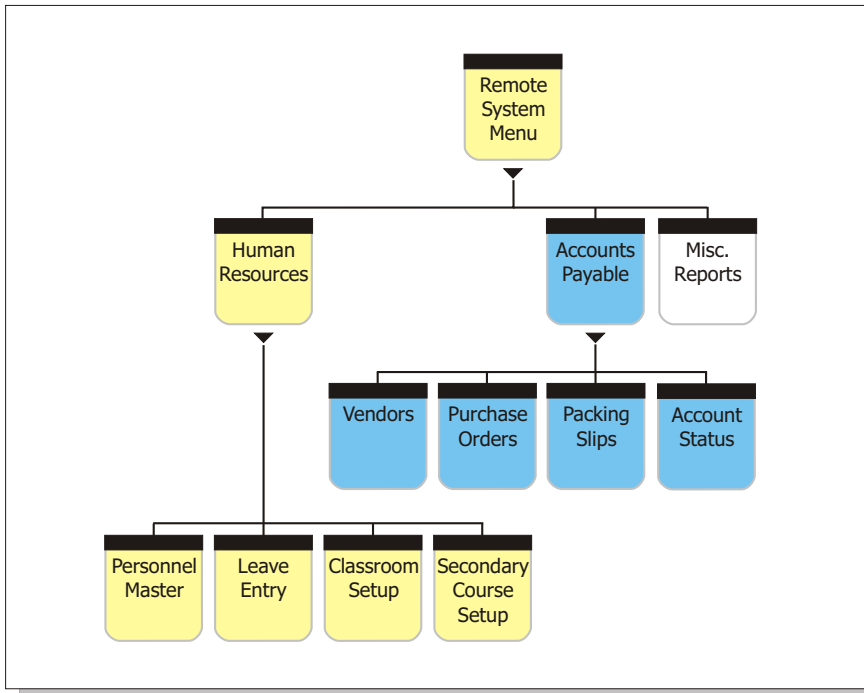


Remote System

www.ebaker.ca



Main Features

Check personnel name and address data

Track Performance Appraisals

Employee leave entry including a full year calendar overview

Elementary class and secondary course setup

Purchase order entry and commitment

Packing slip entry so bills will be paid based on only what has been received

Vendor Viewer

Account Status Checker

A remote data entry system with access to a restricted set of employees and accounts based on that department or location. Connections to the main data sever can be made either through wide area networks (WAN), dial-up or high-speed modems. Designed to give a department head better control over his/her budget, the remote system will also assist the Human Resources department with the entry of performance appraisals and employee leave, and also the Payroll department with the entry of time cards.

